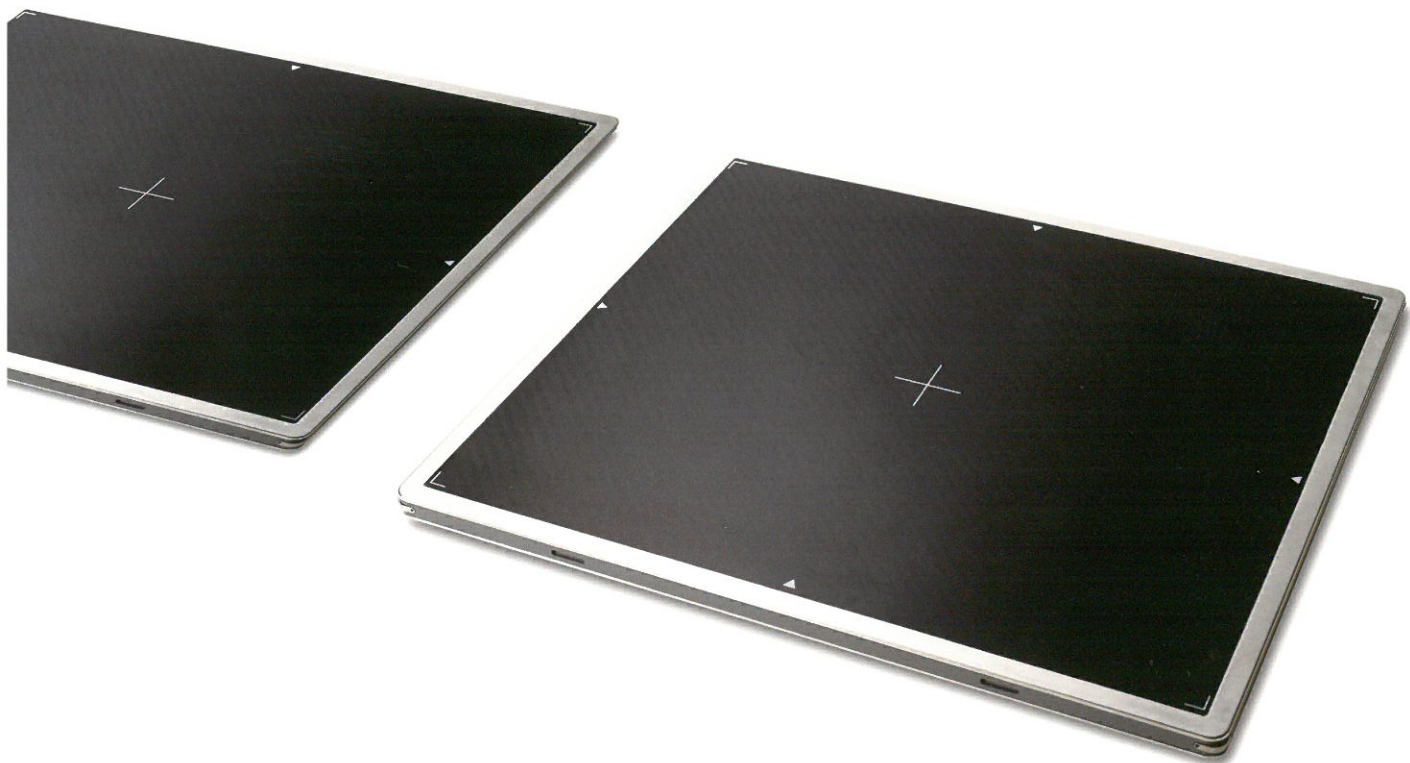

Saturn 8000 14x17 Wireless

Wireless Portable Flat Panel Detector
for Digital Radiography



Saturn 8000 14x17 Wireless is a NMI's 14" x 17" flat panel detector for general radiographic applications using its unique image processing system. With the size the same as that of CR cassette or films, it fits into almost all existing bucky trays. It is easy to acquire and instantly transmit images to the DICOM server through Wi-Fi network. The battery charger can recharge up to 3 batteries at the same time within 2 hours. An additional tether cable connection to the detector can also recharge the battery without removing it from the detector. AP mode enables customers to take X-ray examinations directly to a computer or a laptop with Wi-Fi connection. In case of disconnection of Wi-Fi network between the detector and the image acquisition software, the detector can save up to 100 images at its on-board memory. After resuming communication with the detector, all saved images can be transmitted to the software.

SATURN 8000

Saturn 8000 14x17 Wireless

Wireless Portable Flat Panel Detector for Digital Radiography

SATURN 8000

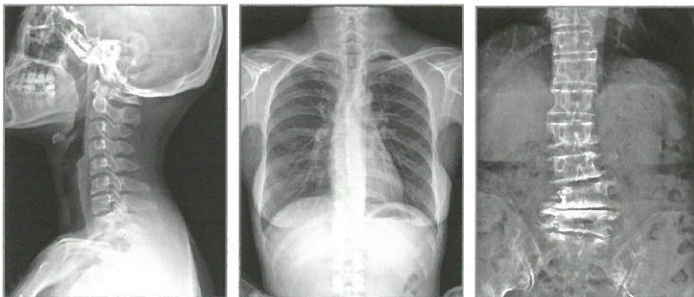
Features

- * Wide active area of 14" x 17"
- * High spatial resolution with 140um pixel array
- * Wi-Fi data transfer with dual band (2.4GHz and 5GHz)
- * Stable and reliable automatic exposure detection
- * Direct communication with smart devices
- * Viewer software running on Windows™ OS (DxWorks)

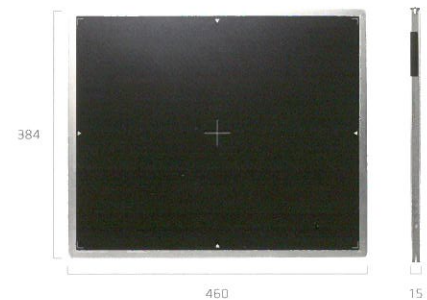


Configuration
Detector
System Control Unit
Charger

Acquired Images



Drawing



Technical Specification

Application	General radiography
Technology	Flat panel detector : a-Si TFT with PIN diode
Scintillator	CsI:Tl / Gd ₂ O ₂ S:Tb
Pixel Pitch	140um x 140um
Pixels	2,560 x 3,072 pixels
Image Size	14 x 17 inches (35 x 43cm)
A/D Conversion	14 bit
Grayscale	16,384 steps
X-ray voltage range	40 ~ 150kVp
X-ray generator Interface	Line trigger : DR Trigger Mode Auto trigger : AED (Automatic Exposure Detection) Mode
Wireless Interface	IEEE 802.11a/b/g/n (2.4GHz/5GHz dual band)
Dimensions	460 (W) x 384 (L) x 15 (T) mm
Weight	Approx. 3.3kg (GADOX) / 3.4kg (CsI)
Operating Environment	15 ~ 35°C, 30 ~ 85% RH (non-condensing)
Power	DC24V, 0.5A (Wired Mode) / 7.4V 4,000mAh Lithium Ion Polymer Battery

* Specifications are subject to change without prior notification.

FDA Approved  

Office

3F., NO.32, Sec. 2, Zhongyang S. Rd., Beitou Dist., Taipei City 11270, Taiwan
Tel +886-2-2892-2275 Fax +886-2-2892-2172 E-mail Sales@newmedical.com.tw

Factory

41-3, Burim-ro 170beon-gil, Dongan-gu, Anyang-si, Gyeonggi-do, 14055
Republic of KOREA
www.nmi-dr.com

NMI