

# Patient Monitor

## PM-2000A PRO



Patient Monitors



# Model PM-2000A PRO

## Accurate Readings And Optimized Performance

The PM-2000A PRO patient monitor meets the most basic monitoring needs, bringing easy access to high-quality healthcare for everyone.





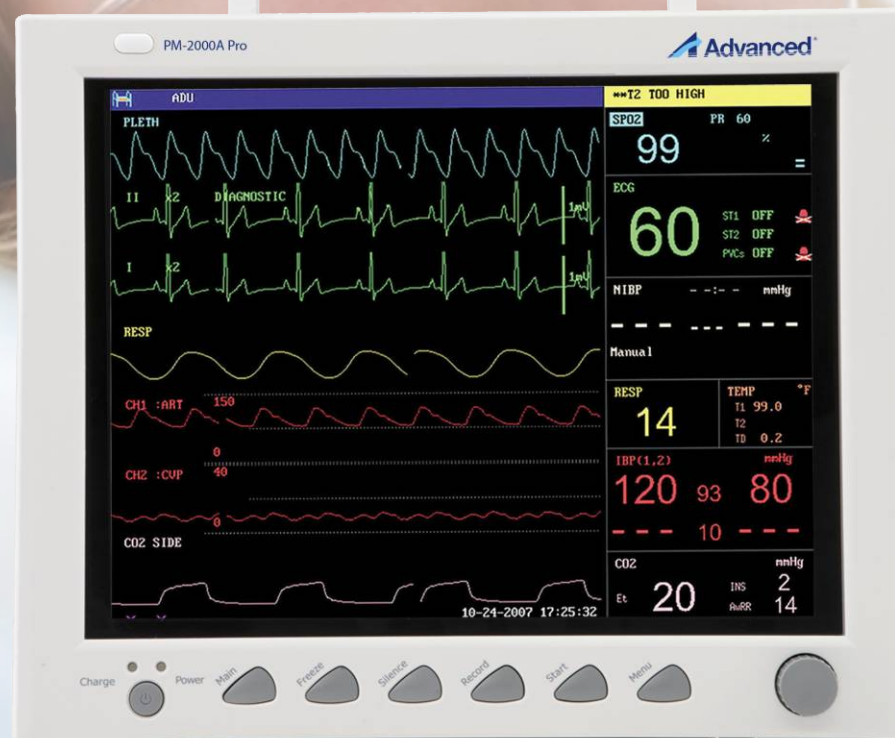
# PM-2000A PRO Patient Monitor

Transport And Mounting Solution



2 YEARS  
warranty

High Resolution Color TFT LCD Display.  
Pacemaker detection.  
Defibrillation protection.  
Nurse Call function.  
Event marker.  
Extended Full-disclosure trend information.  
Comprehensive alarm system.  
Bidirectional communication with Monitoring Central Station (CMS-2000).  
Data Management by Patient Care Viewer PC Software.  
OxyCRG, assessment of respiration and circulation for neonates.  
ECG & Heart Rate (HR).  
ECG Waveform  
Arrhythmia analysis.  
ST-segment analysis.  
Respiration Rate (RR).  
Respiration Waveform.  
SpO2 & Pulse Rate (PR).  
SpO2 plethysmographic waveform.  
SpO2 pulse tone modulation.  
NIBP: SYS, DIA, MAP and Pulse Rate.  
Two Temperature Channel.  
Temperature Difference between two channels (TD). Two IBP Channels (optional )  
Dual-IBP waveforms.  
CO2 waveform.  
Sidestream End Tidal CO2 (EtCO2).  
Fraction of inspired carbon dioxide (FiCO2).  
Air Way Respiration Rate (AwRR).  
Thermal Recorder ( optional )  
Bed-to-Bed viewing display.  
Drug calculation and titration table.  
USB Port, VGA output and RJ-45.  
Built in rechargeable battery.  
Meets IEC 60601-1+A2+A2 & IEC 60601-2+A1 Safety Standards.  
Meets FDA 510(k) requirements.  
Two years warranty



Built-in Temporary Memory

500	96h	60	720s	Lan	USB	WiFi
NIBP Measurement Review	Trend Review	Alarm Review	Frozen Waveform			

# Patient Monitor

Clinical Network

Bi-directional communication through Central Monitoring station CMS-2000.



CMS-2000 Software, wired or Wi-Fi

Multiple Display Modes

3/5 lead ECG  
analysis OxyCRG for  
neonate. Large Font  
Trend screen



3/5 lead ECG analysis

OxyCRG for neonate.

Large Font

Trend screen

G2 CO2 (Sidestream) ( optional )

Superior water trap designed for accurate monitoring.  
iCARB algorithm with intelligent CO2 pseudo wave identification technology.  
Multiple sampling accessories as option for adult, child neonate and patients.

IBP Invasive Blood Pressure ( optional )

Measurements are displayed as waveforms and numeric pressures.  
ART Arterial blood pressure  
PA Pulmonary artery pressure  
CVP Central venous pressure  
RAP Right atrial pressure  
LAP Left atrial pressure  
ICP Intracranial pressure  
P1-P2 Expanded pressure.

## Technical Specifications

Physical Specifications	Dimensions Weight	320mm (L) x 150mm (W) x 265mm (H) 4.2kg (with battery)
Display	Display Resolution Traces Displayed Waveforms Displayed Sweep Speed	12.1" Color TFT LCD 800 X 600 dpi Up to 8 Up to 13 6.25, 12.5, 25, 50mm/s
Power Supply	AC Power Supply Internal Battery	100-240V AC, 50/60HZ - 14.8 Rechargeable Li-ion Battery
Resp	Method Operation Mode Rr Measurement Range Resolution Apnea Alarm Threshold Band Width Sweep Speed	Trans-thoracic impedance Auto/Manual Adult: 0-120rpm, Neonate/Pediatric: 0-150rpm 1rPM 0s, 15s, 20s (default), 25s, 30s, 35s, 40s 0.2-2.5Hz (-3dB) 6.25mm/s, 12.5mm/s, 25mm/s, 50mm/s
ECG	Lead Type Gain Selection Sweep Speed Ecg Hr Range Resolution & Accuracy Bandwidth (-3db) St-Segment Detection	5-lead and 3-lead selectable x0.125; x0.25; x0.5; x1; x2; x4 6.25mm/s, 12.5mm/s, 50mm/s Adult: 15-300bpm, Neonate/ Pediatric: 15-350bpm / ±1bpm or ±1%, whichever is greater Diagnosis mode: 0.05-150Hz / Monitoring mode: 0.5-40Hz / Surgical mode: 1-20Hz Measurement range: -2.0mV ~ 2.0mV / Alarm range: -2.0mV ~ 2.0mV
SPO <sub>2</sub>	Measurement/Alarm Range Resolution Accuracy PR Measurement/ Alarm Range Resolution Accuracy Refresh	0 - 100% (ADV SpO <sub>2</sub> ) 1% ±2% (70-100% Adult/Pediatric); ±3% (70-100% Neonate none-motion) 25 - 300 bpm 0%-100% 1 bpm ±2bpm 1s
NIBP	Method Operations Modes Auto Measurement Time Interval Measurement Unit Measurement Types Pressure Range Adults Pressure Range Pediatrics Pressure Range Neonates Resolution Accuracy Alarm Pr From Nibp Resolution Accuracy	Automatic Oscillometric Manual / Automatic/ Continuous Adjustable 1, 2, 3, 4, 5, 10, 15, 30, 60, 90, 120, 240, 480 minutes. MmHg/kpa Selectable Systolic, Diastolic, Mean Systolic: 40 - 270 mmHg / Diastolic: 10 - 215 mmHg / Mean: 20 - 235 mmHg Systolic: 40 - 200 mmHg / Diastolic: 10 - 150 mmHg / Mean: 20 - 165 mmHg Systolic: 40 - 135 mmHg / Diastolic: 10 - 100 mmHg / Mean: 20 - 110 mmHg 1mbp Max mean error ±5mmHg / Max standard deviation ±8mmHg Systolic, Diastolic, Mean Measurement 40-240 bpm 1 bpm 3bpm or 3%, (whichever is greater)
Thermal Recorder	Print Speed	25, 50mm/s / Paper Width: 50mm
Temperature (2 Channels, 1 Probe By Default)	Measurement/Alarm Range Channel Resolution & Accuracy	0~50°C (32-122°F) Dual-channel. Provide T1; T2; ΔT ±0.1°C (without probe)
CO <sub>2</sub> Sidestream (Optional)	Range Accuracy AWPR Accuracy Sample Flow Rate	0~13% (0-100mmHg) ±2mmHG (<5.0% CO <sub>2</sub> ) ±6mmHG (>5.0% CO <sub>2</sub> ) 1% or ±1rpm 10-200 ml/min
IBP (2 Channel Optional)	Measurement Pressure Measurement Range Resolution/Accuracy Sensitivity Impedance Range	ART, PA, CVP, RAP, LAP, ICP, P1, P2 -50~300 mmHg 1 mmHg / ±2% or ±1 mmHg (whichever is greater, without probe) 5 V/VmmHg 300-3000 Ω

2018 Advanced Instrumentations Inc., is a U.S.A registered company – All rights reserved.

All functionality, features, specifications and other product information provided in this document including, but not limited to, the benefits, design, pricing, components, performance, availability, and capabilities of the product are subject to change without notice or obligation. Advanced Instrumentations reserves the right to make changes to this document and the product described herein, at any time, without obligation on Advanced Instrumentations to provide notification of such change. Actual description and specification of the product in this document may be different. Images shown here are for representational purpose only, actual may vary.

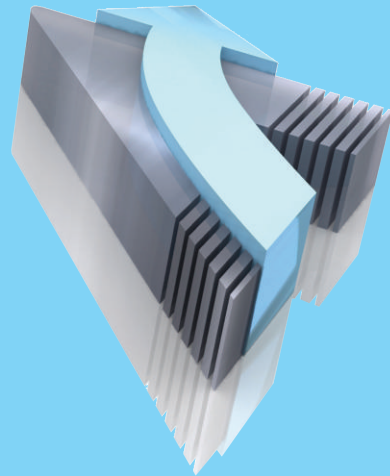
Advanced and Advanced Instrumentations trademarks and logos shown are property of Advanced Instrumentations Inc.

## Success Through Quality/Since 1988

Advanced Instrumentations Inc.  
Success Through Quality,  
a Company You Can Trust

Advanced Instrumentations manufactures leading medical technology equipment in the areas of anesthesia, cardiology, operating room, gynecology and obstetrics, IV therapy, patient monitors, hospital furniture, neonatology and ultrasound. We deliver to the healthcare industry the highest-quality standards, reliability, and patient safety in all our products through effective, and rigorous testing procedures by our own department of Biomedical Engineering in the United States. All of our equipment comes with 2 years warranty and excellent post-sale support services.

Advanced Instrumentations Inc. complies with the requirements of the ISO standards 13585-2016 following the audit by one of the most prestigious global certification companies, as it is the SGS. We comply with the requirements and are audited by the US Food and Drug Administration (FDA) an entity of the Health and Human Services of the United States of America. These certifications are the result of dedication and commitment to excellence in our products and services.



6800 N.W. 77 Court,  
Miami, FL 33166  
U.S.A.  
Phone: 305-477-6331  
Fax: 305-477-5351

For additional information visit us at:  
[www.advanced-inst.com](http://www.advanced-inst.com)