

# Infusion Pump IP-200

IV



I.V. Therapy

# IP-200

## Infusion Pump

The advanced® IP-200 infusion system is a compact and comprehensive drop and volume infusion pump which can infuse fluids, medication or nutrients into a patient's circulatory system, and it has power packed features, and provides accurate and reliable delivery over the whole range of delivery rates.

Advanced® IP-200 could be widely used for various departments of hospitals, such as medicine department, department of pediatrics, department of gynecology and obstetrics, oncology, neurology, ICU and CCU.

*IV Therapy*

### Features

- Touch Screen LCD Display 4" TFT.
- Motor-driven door and anti-leakage clip design.
- VTBI: 0.01-9999 ml.
- Flow rate range: 0.01-1200 ml/h.
- KVO Rate: 0.01-5.00 ml/h adjustable.
- The increment is 0.01 ml/h.
- Manual bolus and automatic bolus.
- Can be integrated into Docking Station.
- Database: Can record no less than 4000 history logs.
- Can record the latest 30 therapies parameters.
- Can add the edit the name of IV set brands on the pump without connect to any external devices.
- Screen Brightness is adjustable in 10 levels.
- The alarm volume is adjustable in 10 levels.
- Occlusion alarm: 4 levels adjustable .
- Pressure unit: 4 kinds selectable.
- Have the upstream pressure detection.
- The alarm information can be displayed in the form of text, sound and image at the same time.
- AC Power Supply: 220-230V / 50 – 60Hz.
- Rechargeable Lithium battery 9 hours at 25 ml/h.
- Battery capacity is showed on the screen Battery.
- Charging time : Less than 6 hours.
- Wireless LAN (optional)
- Standby function.
- Drug Library.
- Moisture protection: IP24.
- Meets ISO 13485 Quality Standard.
- Two year warranty.



2 YEARS  
warranty

## Technical Specifications

<b>Physical Specifications</b>	Dimensions Weight	234(L)*99(W)*120(H) mm Approx 1.6 kg
<b>Display</b>	Resolution Touch Screen Door Design Flow Clamp	4.3 " TFT screen Yes Automatic Automatic
<b>Specifications</b>	Working Principle IV Sets Brands Concentration Infusion Modes Relay Mode Micro Mode Rate Range Accuracy Change Rate Running VTBI(volume to be infused) Volume infused Dose Rate units KVO Rate Purge Bolus Anti-bolus	Linear Peristalsis Open system to use univeral IV sets with brand name editable Calculate Automatically 7 modes (ml/h, body weight, drip, loading dose, ramp, sequence and relay Mode) Supported 100ml/h to 1200m/l, programmable 0.01~1200ml/h with min. increment 0.01ml/h ±5% Supported 0~9999ml 0~9999ml More than 15 types 0.01~5.0ml/h, Default Value is 1ml/h 1200ml/h Manual Bolus and Programmable Bolus Supported
<b>Alarm Information</b>	Audible and Visible	VTBI Infused, Pressure high, Battery empty, KVO finished, Check upstream, Door Error, Air bubble, Door Open, System error, VTBI near end, Battery near empty, no battery inserted, Reminder alarm, Standby time expired, no power supply, Drop sensor connection
<b>Technical</b>	Air Detection Occlusion Level Upstream Occlusion Drug Library Drug Units History Record Other Functions Voice Volume Display Brightness Contrast Dynamic Pressure Night Mode Standby Screen Lock Password Protect Languages	7 Levels, sensitivity 20ul 12 Levels Support More than 2000 items ug, mg, g, u, ku, iu, eu, mmol, mol, kcal More than 5000 Records Nurse call, RS232, Data Export 10 Levels 10 Levels Support Support Support Support Support Support English, Spanish, French, Portuguese, Dutch
<b>Power</b>	Supply Battery Operating Time Charging Time	DC:12V AC:110/240V, 50/60HZ 11.1V Rechargeable Lithium polymer battery 2600mAh 9 hours at 25ml/h 5 hours under OFF state
<b>Environment</b>	Temperature Atmospheric Pressure	5~40°C, H: 10%~95% 86.0kPa~106.0kPa
<b>Type</b>	Classification Water Proof	Class I,CF equipment IP 24
<b>Conection</b>	WiFi Interface	Optional Mini USB

2018 Advanced Instrumentations Inc, is a U.S.A registered company – All rights reserved.

All functionality, features, specifications and other product information provided in this document including, but not limited to, the benefits, design, pricing, components, performance, availability, and capabilities of the product are subject to change without notice or obligation. Advanced Instrumentations reserves the right to make changes to this document and the product described herein, at any time, without obligation on Advanced Instrumentations to provide notification of such change. Actual description and specification of the product in this document may be different. Images shown here are for representational purpose only, actual may vary.

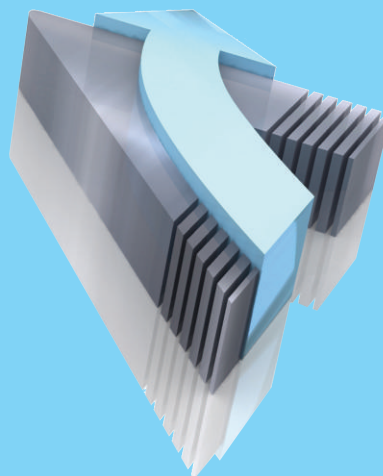
Advanced and Advanced Instrumentations trademarks and logos shown are property of Advanced Instrumentations Inc.

## Success Through Quality/Since 1988

Advanced Instrumentations Inc.  
Success Through Quality,  
a Company You Can Trust

Advanced Instrumentations manufactures leading medical technology equipment in the areas of anesthesia, cardiology, operating room, gynecology and obstetrics, IV therapy, patient monitors, hospital furniture, neonatology and ultrasound. We deliver to the healthcare industry the highest-quality standards, reliability, and patient safety in all our products through effective, and rigorous testing procedures by our own department of Biomedical Engineering in the United States. All of our equipment comes with 2 years warranty and excellent post-sale support services.

Advanced Instrumentations Inc. complies with the requirements of the ISO standards 13585-2016 following the audit by one of the most prestigious global certification companies, as it is the SGS. We comply with the requirements and are audited by the US Food and Drug Administration (FDA) an entity of the Health and Human Services of the United States of America. These certifications are the result of dedication and commitment to excellence in our products and services.



6800 N.W. 77 Court,  
Miami, FL 33166  
U.S.A.

Phone: 305-477-6331  
Fax: 305-477-5351

For additional information visit us at:  
[www.advanced-inst.com](http://www.advanced-inst.com)